

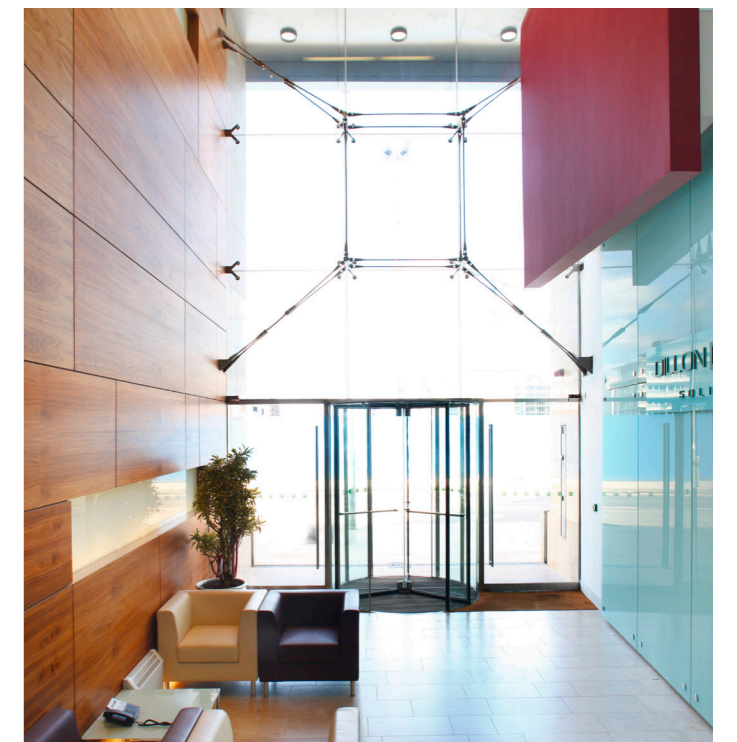
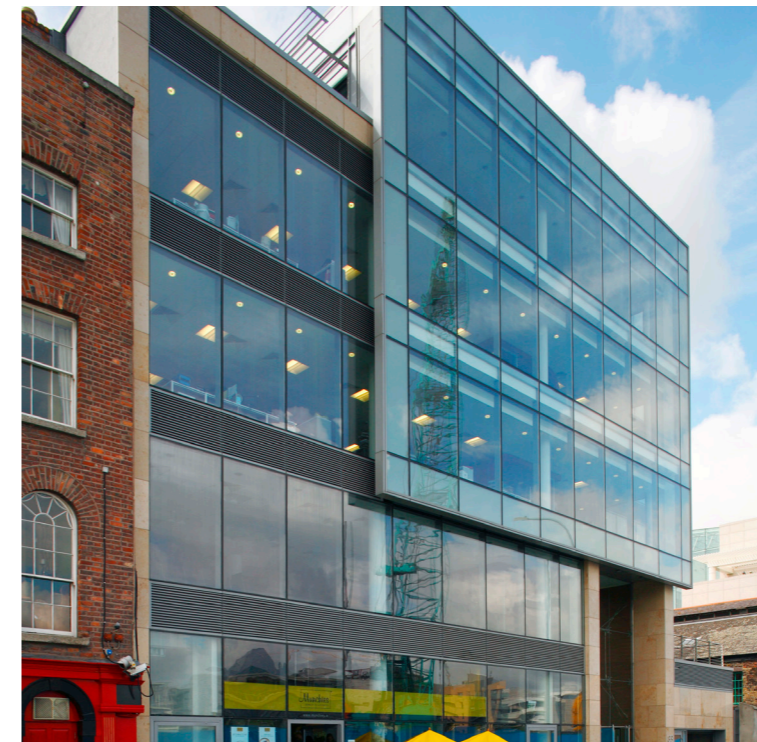
# Dillon Eustance

## Sir John Rodgerson's Quay, D2

This is a state of the art office development which is the head office of a leading national legal firm. The offices were constructed on Sir John Roberson's Quay close to Dublin City Centre. The building is a five-storey office over basement car parking and storage. There is an in-situ concrete frame with external facades consisting of extensive curtain walling and brise soleil, stone and insulated render.

The double-height feature reception area has a glazed cantilevered meeting room at the first-floor level. The entrance foyer features a unique structural glazed screen suspended on high-tensile stainless steel rigging. The project included the fit-out to all floors including air conditioning and glazed partitions.

This project displays Elliott Group's ability to deliver high-quality office accommodation in restricted city-centre sites, close to the River Liffey, and overcome the challenges of adverse ground conditions, logistics, and traffic management.



Client:	Degas Properties
Value:	€13,500,000
Size:	4,645 m <sup>2</sup>
Duration:	12 Months
Architect:	HRK Architects
Services Engineer	Varming Consulting Engineers
C&S Engineer	Barrett Mahony Consulting Engineers